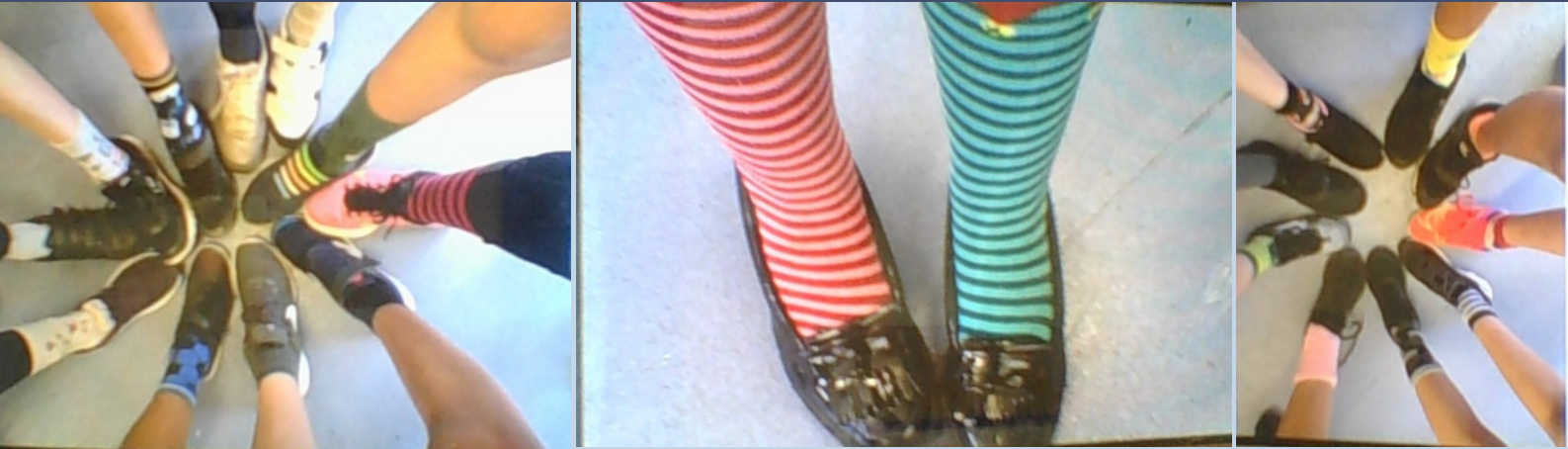


ST PAUL'S WALDEN NEWS



THE LATEST NEWS AND UPDATES FROM ST PAUL'S WALDEN PRIMARY SCHOOL



A MESSAGE FROM MRS ADSHEAD

As the weather is turning colder, I would like to remind everyone that it is really important that the children wear a waterproof coat to school. We do expect the pupils to go outside at playtime if it is drizzling.

We would like to remind everyone about the PTA Christmas Fair that is taking place at school next Saturday, 26th November, between 2pm and 4 pm. If you would like to see Santa, then please purchase your tickets via Arbor. We would also like to remind you to return all unsold raffle tickets to the school office. This allows us to sell them on the day of the fair.

Don't forget there will be a bake off at the fair, one for adults and one for children. There will be a prize for the winning entries!

I would like to thank everyone who supported the Odd Sock day on Monday and Children in Need today.

Canon Stephen Fielding has been into school today judging the Christmas card competition and has selected the winning design for this year's parish Christmas card. It is remaining a secret until the printing! Thank you to all those children who submitted entries they were all very good and it was a difficult decision.

INSIDE THIS ISSUE

2-8 Learning Across the School

9 Golden Tickets

10 - 12 Important Dates

13 & 14 PTA Events

15 & 16 Other

Information



LEARNING IN THE WILLOWS

In Willows class, we have been looking at comparing different objects as part of our maths learning. The children have started looking at how tall they are compared to each other, and how objects are different lengths, using vocabulary such as long, tall, high and short. They used linking cubes to measure their playdough 'worms' and counted carefully to see how long they could get them. They then started thinking about width, and using the outdoor classroom, compared and discussed the sizes of the twigs, wood and other objects that they found, using the words wide, thick, fat and thin. Using pan balancers as scales, they have started exploring the weight of different objects. They have been able to explain that if something is heavy, that side of the scales will go down, and if two objects are the same weight then the scales will balance, meaning that neither of the objects will be tipped down further than the other.



LEARNING IN THE ROWANS

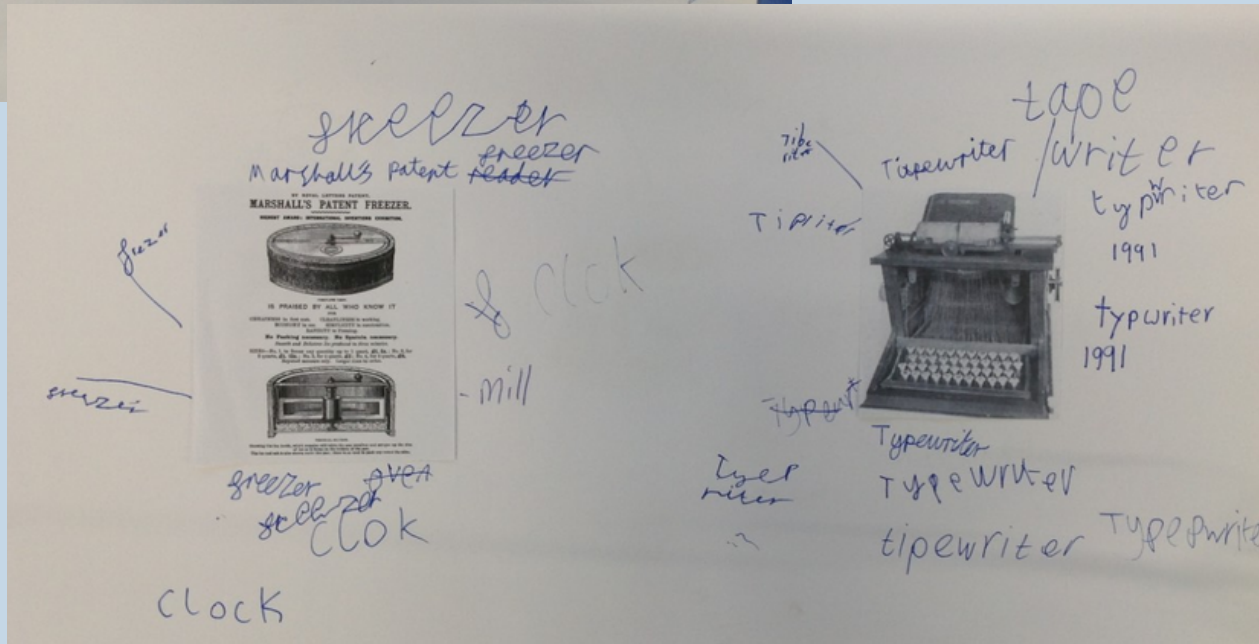
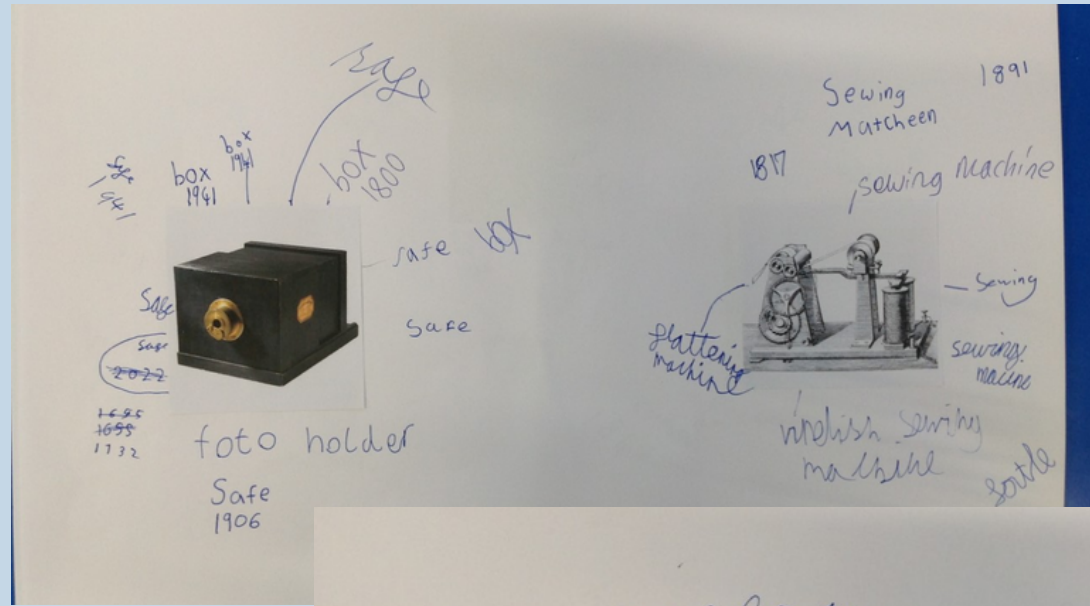
For anti-bullying week in Rowans, we have been discussing how wonderful it is that we are all different. To celebrate this, as well as wearing our odd socks to school, we coloured in our own odd socks to display in the classroom.





Science

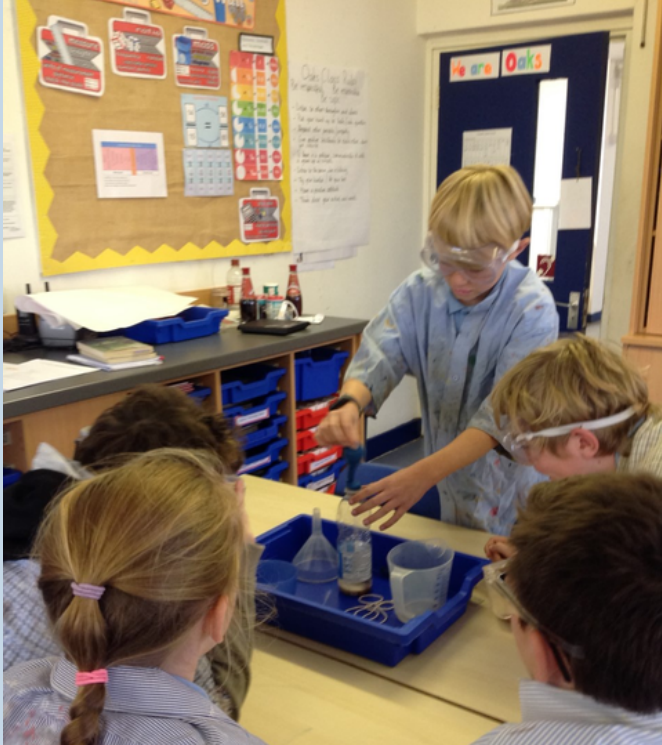
History





LEARNING IN THE OAKS

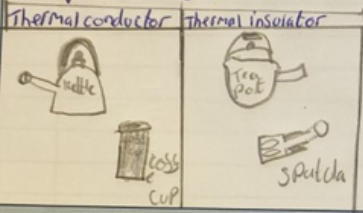
We conducted two experiments that resulted in chemical reactions creating irreversible changes. We enjoyed working on an investigation with bicarbonate of soda and vinegar, where the reaction created a gas that could inflate a balloon.



Knowledge organiser

Topic: Properties and changes of materials

Previous knowledge and skills: Solute is a solid and if you mix it with a liquid it turns to a solution.



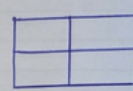
Vocabulary: Soluble - able to be dissolved. Dissolves - when a substance is mixed with a liquid. Irreversible - impossible to reverse, turn back or change. Transparent - you can see through it. Burning - something catching on fire.

What I would like to know: I would like to know what Oxidisation is?

Knowledge organiser

Topic: Properties and changes of materials

Previous knowledge and skills: The properties of a piece of paper towel is that it can absorb water.



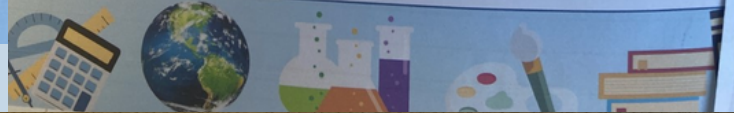
transparent



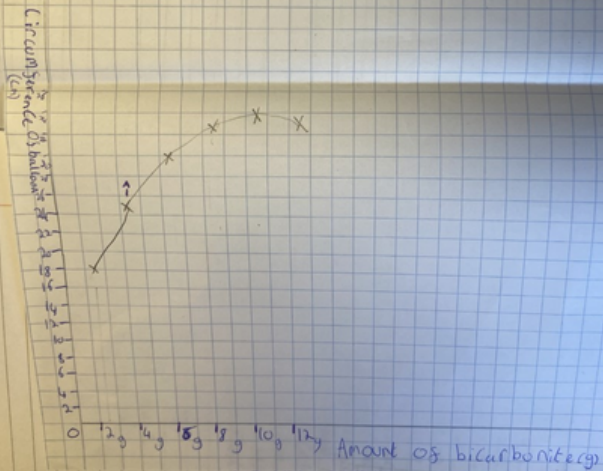
magnet

Vocabulary: Soluble - able to be dissolved Thermal - relating to or caused by heat or by changes in temperature Gas - any air-like substance that is not a liquid or a solid.

What I would like to know: How many materials are there in total? Is gas a liquid? What does combustion mean? What is the most used material in the world?



A graph to show how a balloon inflated with different amounts of bicarbonate soda



10/11/22

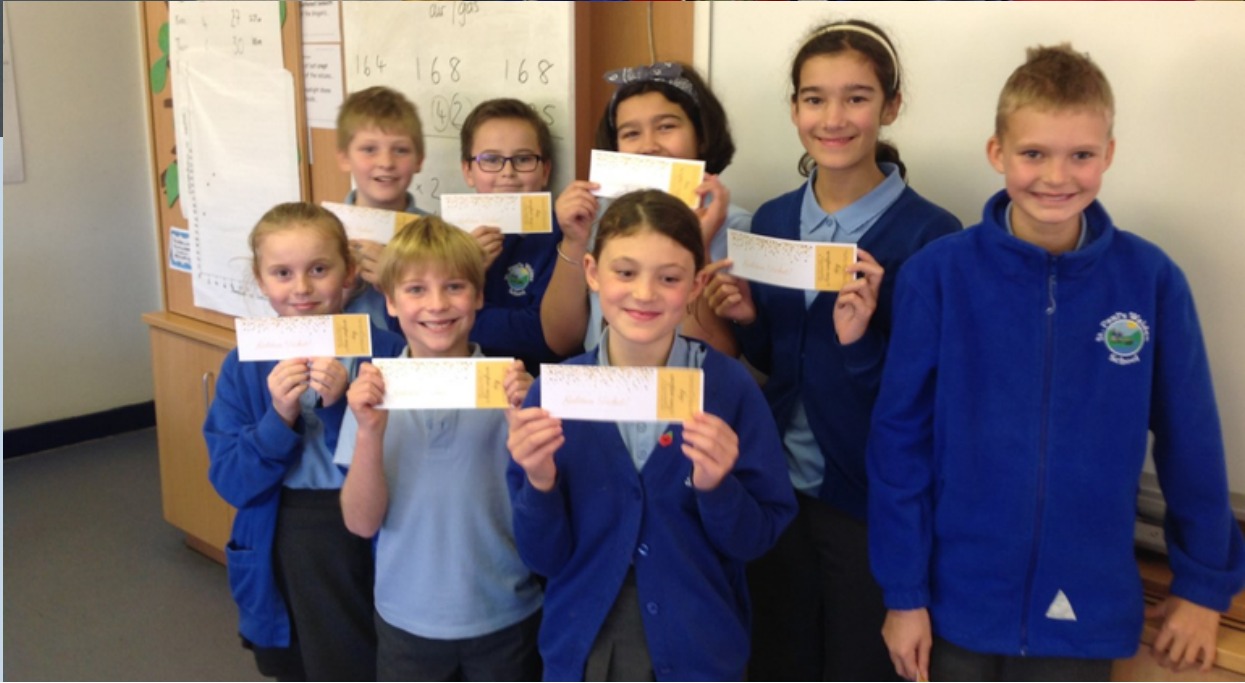
KQ: Why did the balloon inflate?

- 1 Pour an inch of vinegar in the bottle
- 2 put 1 tablespoon in a funnel going into the balloon
- 3 Place balloon on bottle
- 4 lift balloon pour powder into bottle
- 5 Observe the reaction

Amount of Bicarbonate of Soda (g)	Circumference of Balloon (cm)
2	18
4	27
6 (My group)	30
8	33
10	34
12	33

GOLDEN TICKETS!

We are really proud of Finn, Bella, Nyasha, Eli, Lilly, Isobel, Nathan, Callem, Daya, Lexxy, Leia, Abigail T, Finley and Rae for going above and beyond, earning 10 gold cards. Congratulations on achieving a Golden Ticket!



TERM DATES

Autumn Term 2023

School starts: Monday 5th September

Half Term: Monday 24th to Friday 28th October

Last day of term: Tuesday 20th December **finishing at 2pm**

Occasional Day: Monday 21st November

Inset Days: Thursday 1st September, Friday 2nd September &
Wednesday 21st December

Spring Term 2023

School starts: Thursday 5th January

Half Term: Monday 13th to Friday 17th February

Last day of term: Friday 31st March finishing at 2pm

Summer Term 2023

School starts: Tuesday 18th April

Half Term: Monday 29th May to Friday 2nd June

Last day of term: Friday 21st July **finishing at 2pm**

Inset Days: Monday 17th April & Monday 5th June

Bank Holiday: Monday 1st May

IMPORTANT DATES 2022/2023

23rd November	Silver Birches Class Assembly
25th November	New Parent Open day
26th November	PTA Christmas fair
1st December	Parent drop in session 9:00 to 11:15
15th December	KS2 Christmas Sing Along at All Saints Church
16th December	Christmas Jumper Day
16th December	Whole School Christmas Dinner
19th December	KS1 & Reception Play
5th January	Parent drop in session 9:00 to 11:15
11th January	Willows class parents coffee morning 8:50-9:30am
18th January	Rowans class parents coffee morning 8:50-9:30am
25th January	Silver Birches Class Assembly
28th January	PTA January Jumble
1st February	Oaks class assembly
2nd February	Parent drop in session 9:00 to 11:15
2nd February	Oaks class parents coffee morning 8:50-9:30am
9th February	PTA meeting 8pm in The Bull, Whitwell

IMPORTANT DATES 2022/2023

22nd February	Silver Birch class parents coffee morning 8:50-9:30am
2nd march	Parent drop in session 9:00 to 11:15
8th March	Willows Class Assembly
8th March	Open Evening for all classes 15:15 - 16:00
11th March	PTA Bingo Night
15th March	Rowans Class Assembly
20th March	Parents Evening
22nd March	Parents Evening
30th March	Trip to Whipsnade Zoo NEW
26th April	Willows class parents coffee morning 8:50-9:30am
4th May	Parent drop in session 9:00 to 11:15
8th - 11th May	SATs week KS2
17th May	Rowans class parents coffee morning 8:50-9:30am
18th May	PTA meeting 8pm in The Bull, Whitwell
8th June	Parent drop in session 9:00 to 11:15
14th June	Open Evening for all classes 15:15 - 16:00
21st June	Willows Class Assembly
28th June	Silver Birch class parents coffee morning 8:50-9:30am
28th June	Rowans Class Assembly
5th July	Oaks class parents coffee morning 8:50-9:30am
6th July	Parent drop in session 9:00 to 11:15

CONTACTING THE SCHOOL

For general enquiries, report of an absence or to inform the school of pupil collection arrangements, please contact the school office by email: admin@stpaulswalden.herts.sch.uk or telephone on: 01438 871241.

The office is open between the hours of 8:30am and 4pm during term time only.

St Paul's Walden School PTA



Christmas Fair



Christmas Gift Stalls
Children's Games & Crafts
Raffle Draw and Adult's
& Children's Tombolas
Café - Hot Dogs, Mulled Wine
& Mince Pies

SATURDAY 26th NOVEMBER

2-4pm
at St Paul's Walden School

ENTRANCE
IS FREE

Please buy a Raffle Ticket ... lots of prizes to be won

Saturday 26th November
Christmas fair bake 2022

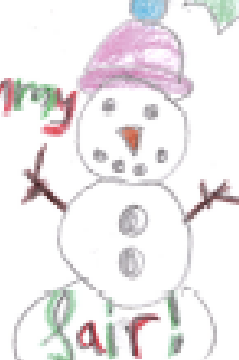
£250 to compete!

raise money for our
School

Can you make a Christmas Bake?
Win A Festive prize!!!

cakes cupcakes jiggypuddings Brownies
BISCUITS cookie mincepies
yule Log Ginger bread

Bring your yummy
Bakes to Christmas



AUCTION OF PROMISES

RAISING MONEY FOR THE ST
PAUL'S WALDEN CHURCH
PRESERVATION FUND



Auction prizes include...

- Tea at the Ritz
- Helicopter Ride
- Stay at a B & B
- Mince Pies
- Christmas cake
- And many more ...

10% of money raised
will go to Crisis
At Christmas



Live music - Raffle - Auction
26th November at 7:30pm, New Fellowship Hall

Tickets available from Whitwell village shop for £5

Whitwell
Players
PROUDLY PRESENT



Snow White

AND THE

MAGNIFICENT

A PANTOMIME BY TLC CREATIVE

**GUNSLINGERS, COWGIRLS & RODEO
STARS INVITED • £9 ADULT, £5 CHILD**

FRIDAY 9TH DEC 7:30PM
SAT 10TH DEC 2:30PM & 7:30PM

ONLY SHOWING AT NEW FELLOWSHIP HALL, WHITWELL

TICKETS AT [TICKETSOURCE.CO.UK/WHITWELLPLAYERS](https://www.ticketsource.co.uk/whitwellplayers)