

ST PAUL'S WALDEN NEWS



THE LATEST NEWS AND UPDATES FROM ST PAUL'S WALDEN PRIMARY SCHOOL



A MESSAGE FROM MRS ADSHEAD

It has been a fabulous couple of weeks with lots of laughter and learning. I would like to say a huge thank you to everyone for making Pierre Henry-Fontaine's visit a great success. We raised a whopping £805. Well done everyone!

This year's Easter egg hunt was a great success and enjoyed by all even though it was the coldest one we have ever done! We would once again like to thank the PTA for supporting this event and providing the Easter eggs.

It is with sadness that we will be saying goodbye to Mrs Maree Smith on 22nd April. Maree has been a TA at our school since 2016 and has supported many pupils throughout her time at St Paul's Walden Primary School. I am sure that you will all join me in wishing her all the best in her new appointment.

We are pleased to announce that we have appointed 2 new class teachers for September 2022. Miss Danielle Swinburne will be teaching in the Silver Birches and Miss Ashleigh Lewis will be teaching in the Rowans Class. It is our intention for you to have an opportunity to meet them prior to September and I will let you know further details next term.

We would like to wish all our families a happy and safe Easter break.

INSIDE THIS ISSUE

2&3 Easter Egg Hunt

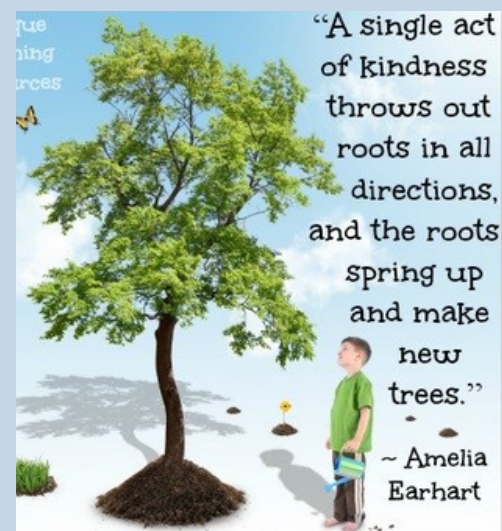
4-9 Learning Across The School

11-12 Golden Tickets

13 Big Plastic Count

14&15 Important Dates

15-19 Other Information

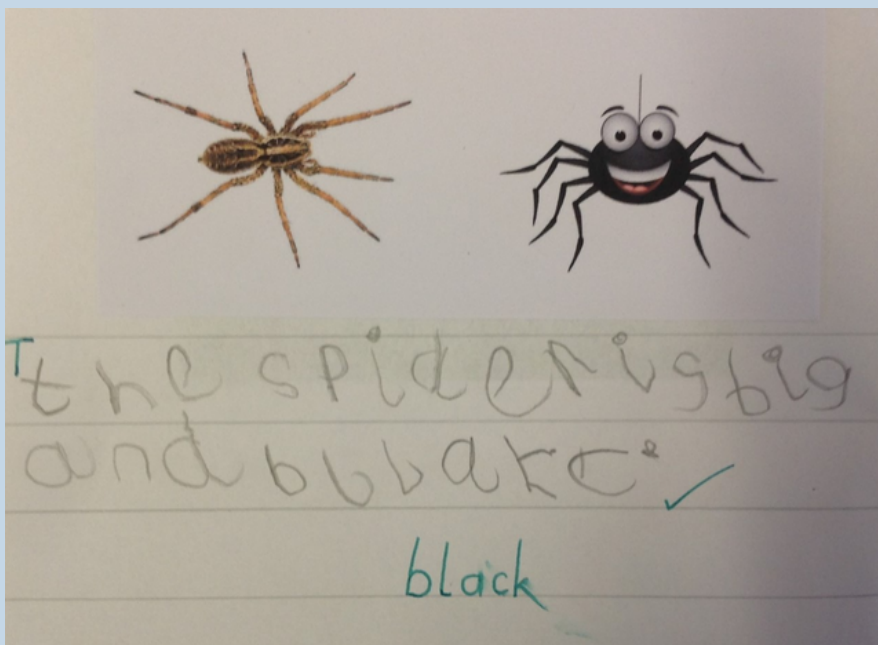
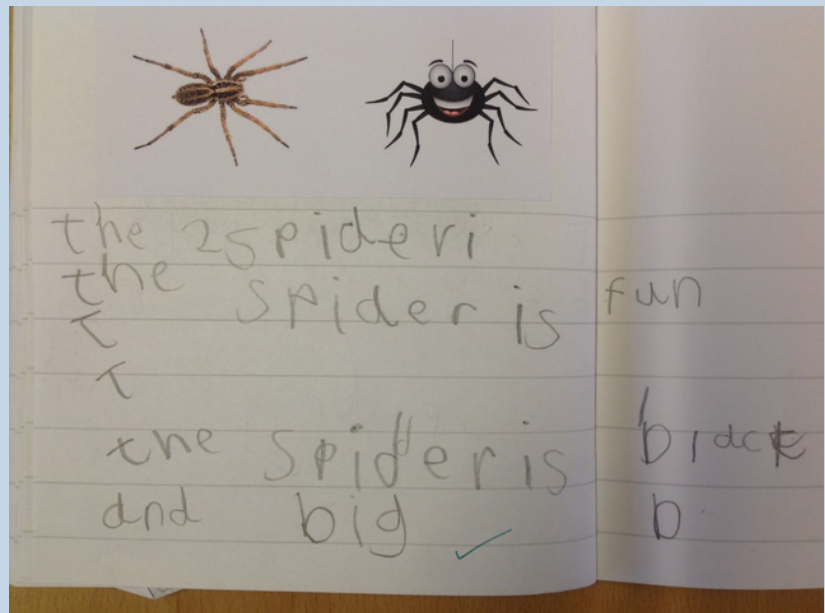
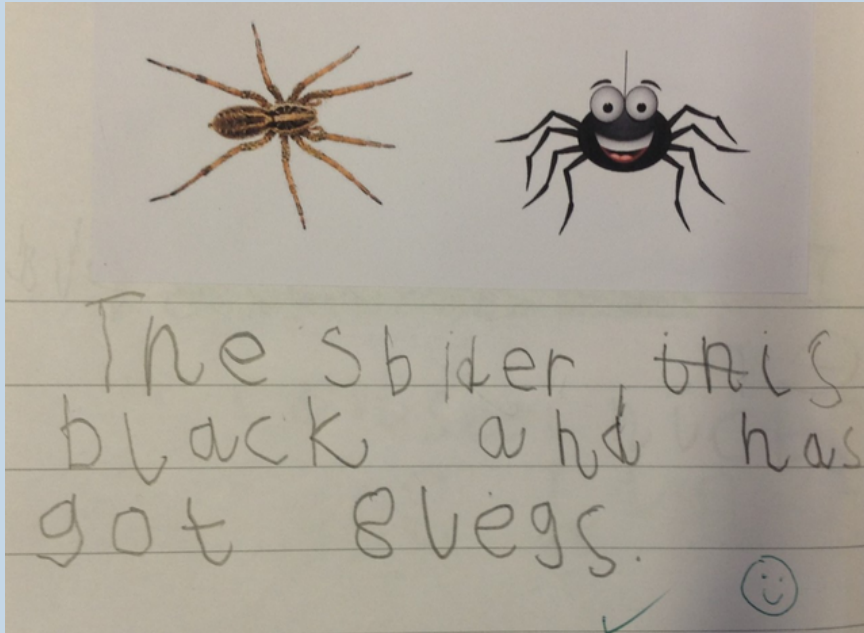






LEARNING IN THE WILLOWS

Continuing on our general theme of 'Come Outside' this term, the Willows children have been looking at minibeasts and in particular this week, spiders. There has already been some great descriptive writing about them, and the children have been making their own webs or spiders from paint, pipe cleaners, netting and even construction bricks!





LEARNING IN THE ROWANS

In PE this week, the Rowans practised their risk taking skills to safely jump off equipment and land!



LEARNING IN THE SILVER BIRCHES

This week we finished off learning about plants and how they distribute their seeds after being pollinated. We discovered that water, gravity, animals, ballistics, and wind all play an important role. First, we learned how each method worked, before role playing each way. We then presented these to the class, and we had to guess which form of distribution was being performed.



LEARNING IN THE OAKS


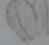
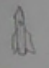
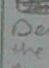

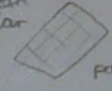
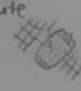
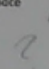
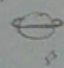
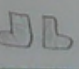

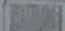

Last week Oaks went to the National Space Centre in Leicester. To enhance our learning experience, Oaks completed a Space Challenge! They were required to find facts and information around the museum and make new discoveries. Here are some examples of their work.

Space Exploration Challenge!

Name: Libby Featembly

Find exhibits at the National Space Centre which fit in the categories below. There are no right or wrong answers - use as much imagination as possible! You may want to draw, explain, photograph or film your answers for each one.

Find something:

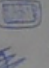

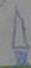

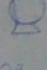
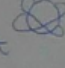

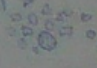
that is taller than you (e.g. the Wavelength Ladder) <u>A space suit</u> 	that is smaller than a dog <u>A glove.</u> 	you can go inside <u>spaceship</u> 	with spots or stripes <u>Denis the Menace</u> 
which has been into space <u>moon-rock</u> 	that uses light from the Sun <u>solar panel</u> 	above your head <u>satellite</u> 	that is part of a rocket <u>The engine.</u>
		that sends information from space <u>A walkie talkie?</u> 	that is older than you <u>The NASA company</u> 
		you can wear <u>boots</u> 	to do with an animal <u>The first rat in space</u> 
		you can watch <u>A touchscreen</u> 	complicated <u>motherboard</u> 

Space Exploration Challenge!

Name: Elana

Find exhibits at the National Space Centre which fit in the categories below. There are no right or wrong answers - use as much imagination as possible! You may want to draw, explain, photograph or film your answers for each one.

Find something:

that is taller than you (e.g. the Wavelength Ladder) <u>the blue streak (rocket)</u>	that is smaller than a dog <u>etch a sketch</u> 	you can go inside <u>columbus module</u>	with spots or stripes <u>Denis the menis</u> 
which has been into space <u>a space ship</u> 	that uses light from the Sun <u>solar panels</u> 	above your head <u>satellite</u>	that is part of a rocket <u>engine</u>
that is gold <u>first ever golden globe award</u> 	local (Leicestershire or your own home) <u>space park</u>	that sends information from space <u>NASA</u> 	that is older than you <u>Anne Franks diary</u> 
		you can wear <u>a prototype lunar spacesuit</u>	to do with an animal <u>the first rat in space</u>
		you can watch <u>planaterium</u>	complicated <u>control room</u> 

Thank you for visiting the National Space Centre. We hope to see you again soon! Visit our website for details of Special Events: www.spacecentre.co.uk

Space Exploration Challenge!

Name: Surek

Find exhibits at the National Space Centre which fit in the categories below. There are no right or wrong answers - use as much imagination as possible! You may want to draw, explain, photograph or film your answers for each one.

Find something:

that is taller than you (e.g. the Wavelength Ladder) <u>The Skylark</u>	that is smaller than a dog <u>Solar</u>
which has been into space <u>Blue streak</u>	that uses light from the Sun <u>Solar Panels</u>
that is gold <u>golden gold</u>	local (Leicestershire or your own home) <u>Home</u>

you can go inside <u>Rocket</u>	with spots or stripes <u>Dennis the Menace</u>
above your head <u>Prospere</u>	that is part of a rocket <u>engine</u>
that sends information from space <u>Radios / Satellites</u>	that is older than you <u>The USSR</u>
you can wear <u>Space suit</u>	to do with an animal <u>Albert (a monkey) Where to Space</u>
you can watch <u>Planetarium</u>	complicated <u>How rocket are built</u>

Space Exploration Challenge!

Name: Nathan

Find exhibits at the National Space Centre which fit in the categories below. There are no right or wrong answers - use as much imagination as possible! You may want to draw, explain, photograph or film your answers for each one.

Find something:

that is taller than you (e.g. the Wavelength Ladder) <u>Atom - 17 Phor</u>	that is smaller than a dog <u>Rock dog the Moon</u>
which has been into space <u>dog</u>	that uses light from the Sun <u>Solar panels</u>
that is gold	local (Leicestershire or your own home)

you can go inside <u>columns model</u>	with spots or stripes <u>beans the monkey</u>
above your head <u>Satellite</u>	that is part of a rocket <u>engine</u>
that sends information from space <u>NASA</u>	that is older than you <u>Anne Shanks diary</u>
you can wear <u>luna space suit</u>	to do with an animal <u>the guise hat in space</u>
you can watch <u>planetarium</u>	complicated <u>control room</u>

Space Exploration Challenge!

Name: Idy - Mai

Find exhibits at the National Space Centre which fit in the categories below. There are no right or wrong answers - use as much imagination as possible! You may want to draw, explain, photograph or film your answers for each one.

Find something:

that is taller than you (e.g. the Wavelength Ladder) <u>the big tower</u>	that is smaller than a dog <u>Moon rock Space gloves</u>
which has been into space <u>Probes Apollo fuel cell</u>	that uses light from the Sun <u>Solar panels</u>
that is gold <u>Golden Globe award</u>	local (Leicestershire or your own home) <u>Bepi</u>

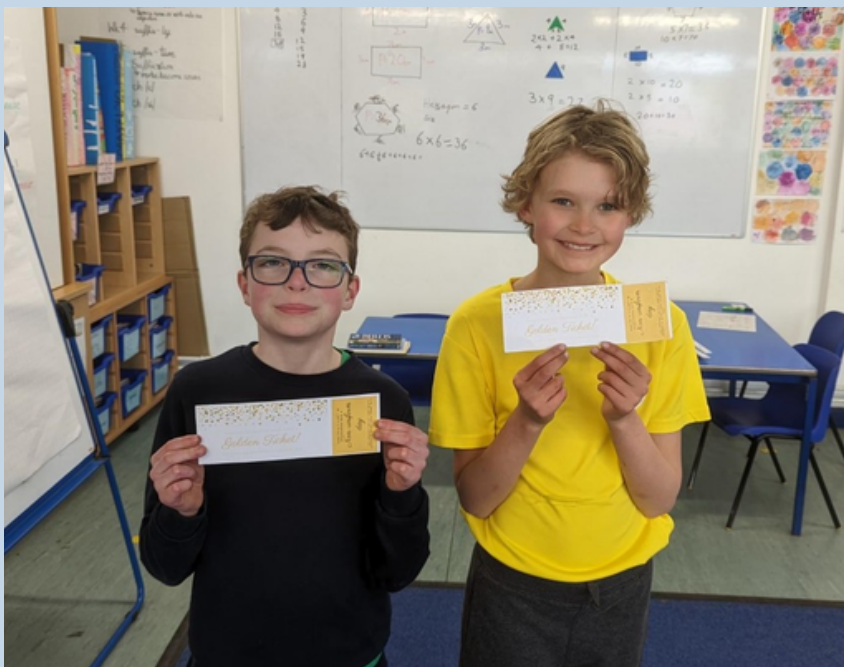
you can go inside <u>A space shuttle (fake)</u>	with spots or stripes <u>Dennis the Menace 17 March 1951</u>
above your head <u>Prospere</u>	that is part of a rocket <u>engine</u>
that sends information from space <u>Satellite</u>	that is older than you <u>Anne Frank Diary During WW2</u>
you can wear <u>Space suit</u>	to do with an animal <u>V-2 rocket Rhases monkey named Albert</u>
you can watch <u>Planetarium</u>	complicated <u>control room</u>



GOLDEN TICKETS!

We are really proud of Angel, Ferne, Isabella, Ivy, Callem, Harry P, Rae, Harry J, Harry C, Alex, Isabelle, Lucy, Monty, Sami, Hunter, Henry C, Lachlan, Leia, Konrad, Reggie, Mudiwa, Luna, Eli and Logan for going above and beyond earning 10 gold tokens. Congratulations on achieving a Golden Ticket!







Happy
Easter



THE BIG PLASTIC COUNT!

GREENPEACE are running a national survey that we thought some of you may like to take part in as a family project. If you do take part we would love to hear about your results! As a school we intend to take part in the survey.

Count your plastic for one week – 16-22 May 2022.

Across the country, households of all shapes and sizes, schools, community groups and businesses, will gather new evidence. How much plastic are we really having to throw away, and what happens to it. The link below will give you more information.

<https://thebigplasticcount.com/>

<https://thebigplasticcount.com/sign-up>



Sign up now, count your plastic for one week and together let's gather the evidence we need to push for proper action to tackle the plastic crisis.

TERM DATES

Spring Term 2022

School starts: Thursday 6th January
Half Term: Monday 14th to Friday 18th February
Last day of term: Friday 1st April **finishing at 2pm**
Inset Days: Wednesday 5th January

Summer Term 2022

School starts: Wednesday 20th April
Half Term: Monday 30th May to Friday 3rd June
Last day of term: Friday 22nd July **finishing at 2pm**
Inset Days: Tuesday 19th April & Monday 6th June
Bank Holiday: Monday 2nd May, Thursday 2nd June & Friday 3rd June
Occasional Day: **Friday 24th June**

Autumn Term 2023

School starts: Monday 5th September
Half Term: Monday 24th to Friday 28th October
Last day of term: Tuesday 20th December **finishing at 2pm**
Occasional Day: Monday 21st November
Inset Days: Thursday 1st September, Friday 2nd September & Wednesday 21st December

Spring Term 2023

School starts: Thursday 5th January
Half Term: Monday 13th to Friday 17th February
Last day of term: Friday 31st March finishing at 2pm

Summer Term 2023

School starts: Tuesday 18th April
Half Term: Monday 29th May to Friday 2nd June
Last day of term: Friday 21st July **finishing at 2pm**
Inset Days: Monday 17th April & Monday 5th June
Bank Holiday: Monday 1st May



IMPORTANT DATES 2021/2022

22nd April	Reports to parents
25th April	Parents evening
27th April	Willows class assembly parents welcome 15:00 - 15:15
27th April	Parents evening
4th May	Reception and KS1 trip to the Tring Natural History museum
5th May	Parent drop in session 9:15 to 11:15
9th - 12th May	KS2 SATs week
18th May	Willows class parents coffee morning
25th May	Coffee morning for parents of SEND children
25th May	Rowans class assembly
26th May	Sports day
8th- 10th June	Oaks class residential trip to PGL
9th June	Parent drop in session 9:15 to 11:15
13th June	School photographs
15th June	Open Evening for all classes 15:15 - 16:00
22nd June	Rowans class parents coffee morning
6th July	KS2 performance
7th July	Governors Meeting
7th July	Parent drop in session 9:15 to 11:15
13th July	Silver Birches class parents coffee morning
14th July	Secondary Transfer Day
18th July	Whole school trip
22nd July	Year 6 leavers event

CONTACTING THE SCHOOL

For general enquiries, report of an absence or to inform the school of pupil collection arrangements, please contact the school office by email: admin@stpaulswalden.herts.sch.uk or telephone on: 01438 871241.

The office is open between the hours of 8:30am and 4pm during term time only.

A watercolor illustration of various plants and flowers. It includes dark blue flowers with white speckles, green leaves, and green seed pods. The plants are arranged in a decorative border around the text.

We would like to invite all parents to our

PARENT DROP IN SESSIONS

1st Thursday of every month.

No appointment needed, feel free to
drop by between 9:15 and 11:15

Staff will be available to answer any
questions and queries that you may
have or just drop in to have a chat.

Messy Good Friday

Easter activities for all children. Games, crafts, songs, quizzes, competitions and stories.

Friday April 15th



St Pauls Walden church

10.30 am – 12.00 am

plus an Easter egg hunt!

Ring Helen for details on 07906189827

Children under 6 must be accompanied by an adult.



Whitwell
Players

Wanted!

**Children of all ages to perform in the
Whitwell Jubilee Pageant:
A play to celebrate
7 decades in the reign of
Queen Elizabeth II
brought to life by the children of
Whitwell.**

**Auditions :
Sunday 10th April at 5pm
and Thursday 14th 5.30pm in the
Village Hall**

**(if you can't make these dates please do get
in touch with the director Bea Wood at
bea.wood96@yahoo.co.uk)**

**The pageant will take place as part of
the Jubilee weekend, 3rd – 5th June**

Family Maths - Saving Together

A 2 x 2-hour workshop for adults & their child(ren)

In Waltham Cross, Mon 4th & Thurs 7th April,
1pm to 3pm

FREE
HOLIDAY
ACTIVITY



STEP 2 SKILLS
PREPARE FOR SUCCESS IN HERTS

01992 556194

www.step2skills.org.uk



Book your place today on Family Maths

Family Spring Crafts

A 2 x 2-hour workshop for adults & their child(ren)

In Waltham Cross, Mon 4th & Thurs 7th April,
10am to 12pm

FREE
HOLIDAY
ACTIVITY



STEP 2 SKILLS
PREPARE FOR SUCCESS IN HERTS

01992 556194

www.step2skills.org.uk



Book your place today on Family Crafts

View these and our other April courses

Functional Skills - Maths

Two maths qualification courses starting this month,
at various levels. Complete your assessment today!

FREE
TO ELIGIBLE HERTS
RESIDENTS



ACCREDITATION
OPPORTUNITY

STEP 2 SKILLS
PREPARE FOR SUCCESS IN HERTS

01992 556194

www.step2skills.org.uk



You'll need to complete an assessment to join a maths course so please apply today at
www.step2skills.org.uk/englishandmaths

English for Beginners - Writing

Two 6-week, ACCREDITED Ascentis courses start in
March, one online, one in Waltham Cross.

FREE
TO ELIGIBLE HERTS
RESIDENTS



ACCREDITATION
OPPORTUNITY

STEP 2 SKILLS
PREPARE FOR SUCCESS IN HERTS

01992 556194

www.step2skills.org.uk



There's still time to join this course - you'll need to complete an assessment so please call us on
01992 556194

