

BENDISH LANE BUZZ

THE OFFICIAL NEWSLETTER OF ST PAUL'S WALDEN SCHOOL, WHITWELL ISSUE 6- 9 FEB 2018

Dear Parents,

“Compassion and tolerance are not a sign of weakness, but a sign of strength.” **Dalai Lama.**



With the arrival of February, comes our new school value, which is tolerance. As a school, we have been exploring tolerance as understanding that we respect and accept other people's differences in terms of race, religion, age, gender and opinions. In the Rowans class, a discussion regarding preferences for biscuits, certainly provided a great way to start about thinking about tolerance.

NEWSLETTER HIGHLIGHTS!

You will find the following items in this newsletter:

- NSPCC
- Safer Internet Day
- School Uniform – New Supplier
- World Book Week 12-16 March 2018
- SPW Kitchen & Willows work in – Sat 24 February
- PTA news and quiz night
- Childcare commissioning survey
- Parentview
- Snow procedure
- Attendance

REMINDERS

12-16 Feb	Half Term
Thurs 22 Feb	Willows class assembly & cake sale
Fri 23 Feb	Childcare commissioning survey deadline
Sat 24 Feb	1pm Kitchen garden & Willows work in
Mon 26 Feb	Parent Consultation Evening
Wed 28 Feb	Parent Consultation Evening
Wed 7 March	Sponsored Archery Challenge for NSPCC
Thurs 8 Mar	Rowans class assembly & cake sale
	Next newsletter published: 9 Mar

Kitchen Garden and Willows outdoor area work in – Saturday 24 February at 1.00pm

We are looking for parents to help us with getting our Kitchen Garden and Willows outdoor area ready for the spring. If you have a few hours to spare and are willing to muck in with tidying up the raised beds, removing any weeds, clearing up leaves, all help will be much appreciated.



Please bring a broom, spade, fork and trowel with you, so we know that we have enough equipment to go around. Everyone is welcome! Children are welcome to attend and are the responsibility of their parents.

Before and After School Clubs Timetable Spring Term 2018	
Monday	8.00am Archery Club 3.15-4.30pm Stay & Play 3.30-4.30pm Football Training (Yr 3-6)
Tuesday	8.00am Apex Street Dance Club 3.15-4.30pm Stay & Play 3.25-4.25pm Netball Club (Yr 2-6)
Wednesday	8.00am Trampoline Club 3.30-4.30pm Multi sports Club
Thursday	8.00am Fencing Club 8.00am Yr 6 Maths Club 3.15-4.30pm Mathletics Club
Friday	8.00am Creatively Mindful Kids 8.00am Yr 6 Maths Club 3.25-4.25pm Gymnastics Club

NSPCC

Every two years, we welcome the NSPCC into our school to present the national 'Speak out. Stay Safe' programme ensuring that all of our pupils have the knowledge and understanding that they need to stay safe from abuse. All children across the school will participate in an assembly on Monday 19 February, with children in year 5/6 participating in a workshop on Wednesday 7 March.

Alongside our work with the NSPCC, we have decided to support the valuable work of the NSPCC by taking part in a fundraising Archery challenge event which will be taking place on Wednesday 7 March. Following our assembly on Monday 19 February, your child will receive a sponsor form. All monies raised will be donated to the NSPCC. Two years ago, the whole school raised over £1000, which would be a fantastic figure for us to aim for again.

School Uniform – New Supplier

Our new supplier is Tylers Sportswear, 6 Woodfield Road, Welwyn Garden City AL7 1JQ. Tel: 01707 396900. The opening hours are Mon-Fri 9.00am-5.00pm. Tylers have set up a web shop for parents to order online, which is the preferred method of purchase. You are able to visit their showroom to buy smaller orders in person. They offer **free delivery to school**. To order, please click the following link Orders can be made online at:

<http://www.tylers-sportswear.co.uk/Catalogue/School-Webshops/St-Pauls-Walden-School>

The uniform orders take approximately a week to be delivered free of charge to the school. On the web shop, go through to the 'Checkout page', click the "Collect from Tyler's" delivery option and in the comments box state "collect from school".

Please note, our new style PE T-shirt is now available to be purchased from Tyler's. There is no requirement for children to replace their existing PE T-shirts with the new style T-shirt. Book bags, junior backpacks and PE bags can be purchased at the school office (by cheque or online at the school gateway).

Bikes, scooters and trikes

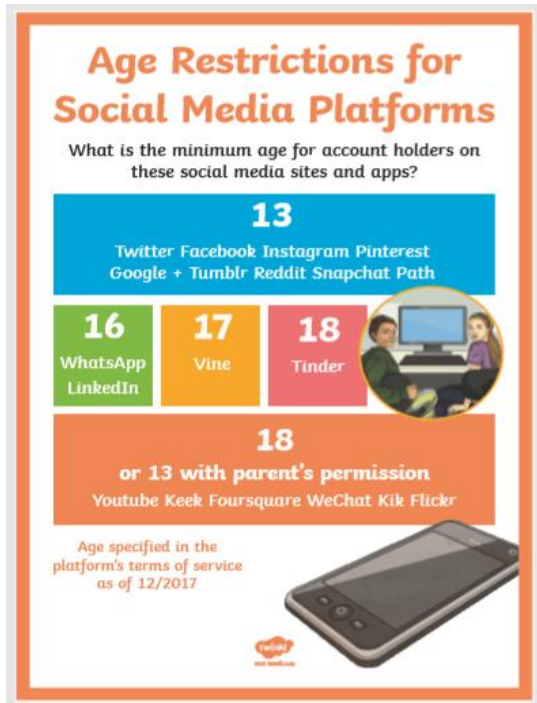
For the safety of everyone at our school, we ask for bikes, scooters, trikes not to be used on our site. Thank you.

Dream - Believe - Succeed

Safer Internet Day

All of our children participated in learning focussed on safe use of the internet on Tuesday 6 February. As well as this, we have tasked our children to redesign the Hertfordshire County Council 'Smile and Stay Safe' poster which we are looking forward to displaying in our school.

For information, it is useful for parents to be aware of the latest advice regarding the age appropriate use of social media accounts.



Further advice regarding social media usage is available on this link: <http://parentinfo.org/article/how-old-does-your-child-have-to-be-to>

Our school website also contains links to e-safety 'how to guides' for parents.
<http://www.stpaulswalden.herts.sch.uk/curriculum/esafety>

PTA news

Thank you for supporting our PTA film night. A fantastic £150 was raised for the PTA. Thank you to parents who kindly gave their time to set up, supervise and tidy away.

PTA Quiz night - Friday 16 March at 7.00pm

Please invite your family and friends to join us for another fabulous St Paul's Walden PTA Quiz Night at the Village Hall Get together a team of up to 8 people for an entertaining evening. The cost is £10 per head with a Fish and Chip Supper included. Bar open at 7pm, Quiz starts at 7.30pm. If you can't get a team together - no problem, just let us know and we will find some highly intelligent people to put you with.

The entry form (including food selection) was sent by schoolcomms on 5 February. Tables are limited so please return your completed form to the school office as soon as possible.

School Facebook Page

To keep up to date with our school news, join us on Facebook at: <https://en-gb.facebook.com/stpaulswaldenschool/>

World Book Week - 12 -16 March 2018

This year we will be celebrating world book day a little differently. We are going to take a trip through the wardrobe to the magical land of Narnia. Each class will be using The Lion, the Witch and the Wardrobe by C.S Lewis as the theme for their learning throughout the week, ending with a Narnia themed dress up day on Friday 16 March.

Due to all your generous cake donations throughout last year, we have been able to book a theatre company to come and perform The Lion, the Witch and the Wardrobe at the village hall on the morning of Wednesday 14 March. As a 'thank you' we would like to invite parents and carers to come and join us for the performance. More details will follow after half term. We are sorry but younger siblings will **not** be able to attend.

Childcare commissioning survey from HCC Family Services

Hertfordshire County Council (HCC) is required to produce a childcare sufficiency report annually that the public are able to view. The childcare sufficiency report supports the council to understand the current need across Hertfordshire for childcare.

The report helps HCC to:

- Establish the sufficiency of childcare places across Hertfordshire
- Support the sustainability of childcare places
- Support the development of places where needed.

HCC would like parents' views on the childcare options available to their family. A survey is available on <https://surveys.hertfordshire.gov.uk/s/6Z24L/>
The survey will close on **Friday 23rd February 2018**.

OFSTED Parent View - ACTION REQUIRED



To help us with continually improving our school, we would like you to complete OFSTED parentview for us. It is available at <http://parentview.ofsted.gov.uk> Once your login has been activated it takes only a couple of minutes to complete answers to the short questions about aspects of the school.

Your views are important in helping us to know what is going well and where improvements and developments can be made, and also show prospective parents the strengths of our school.

When our school is notified of its next Ofsted inspection, the views expressed by parents on Parent View will be taken into consideration. Each parent can register their views.

Snow procedure

If we wake up to snow on the ground, we will always endeavour to inform parents as early as we can in the morning if this affects either the school opening time or results in school closure.

Information regarding school closure will be sent by text and email to parents, and will also be available via: www.hertsdirect.org - click on the severe weather/school closure tab www.stpaulswalden.herts.sch.uk, and Three Counties Radio. If we were in need of an early closure during a school day, we would use the same systems as above to inform parents.

In the event of snow, if any parents would be able to lend a hand to Mr Dillely with snow shovelling or de-icing the school grounds to keep them safe, any help would be gratefully received. Please let the school office know. Thank you!



If we are fortunate enough to have some snowy weather, we politely request for families to not come down to our school site when our school is closed. Our school grounds will be locked and will be inaccessible.

Attendance

Our school attendance from Monday 15 January – Friday 9 February is 96.5%. Well done everyone! Please endeavour to get children to school promptly by leaving home in plenty of time to get to school by 8.50am. Children should be at school between 8.50am-9.00am where they can take part in early morning learning. Late attendance is also regularly monitored by the Attendance Officer, and affects your child's school attendance record.

Registration is at 9.00am, and registers close at 9.15am. Doors into school and the Willows gate are both locked at 9.00am. If your child arrives after 9.00am, please sign your child in at the school office.

Wishing you a lovely half term. We look forward to seeing you all at our consultation sessions on Monday 26 February and Wednesday 28 February.

Best wishes

Louise Phillips
Headteacher

Dream - Believe - Succeed